



SPECIFICATIONS				
Model	FP- I 1270	FP- I 1588	FP- I 1910	FP- I 2542
LED Type	SMD2210	SMD1212	SMD1515	SMD2121
Pixel Pitch (mm)	1.2	1.5	1.9	2.5
Cabinet Resolution (dots)	480*270	384*216	320*180	240*135
Cabinet Size (W×H×D)/(mm)	610*343*31	610*343*31	610*343*31	610*343*31
Module Size (mm)	151.5*343	151.5*171.5	151.5*171.5	151.5*343
Cabinet Weight (kg)	4.8	4.8	4.8	4.8
Contrast	6500:1	6500:1	6500:1	6500:1
Refresh Rate (Hz)	3840	3840	3840	3840
Brightness (nit)	550	550	550	550
Power Consumption (Max./Ave.) (W/m²)	406/138	330/112	296/101	301/102
Gray Scale (Bit)	13 – 16			
Viewing Angle (H/V°)	170° /170°			
LEDs Life Time (hrs.)	100000			
Cabinet Material	Magnesium alloy			
Maintenance	Front access			
AC Input Voltage (V)	AC100–240V 50 / 60Hz			
Operating Temperature/Humidity	-10℃ -40 ℃/10%RH-80%RH(No Condensation)			

*All the data are from CVTE lab. The data above are subject to change without prior notice.



CVTE | QSTECH Co., Ltd.
📍 : No.6, 4th Yunpu Road, Huangpu District, Guangzhou, P.R.China
Wenxuan 3rd Road, Wangsi Street, Fengdong New Town, Xi'an City, Shaanxi Province, China
🌐 : www.qs-tech.com
✉ : marketing@qs-tech.com



H27 PRO Series

Born for Indoor Large-sized Display Application



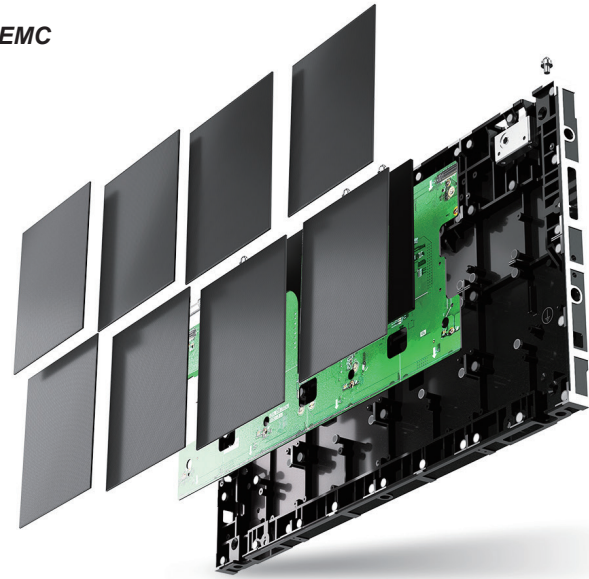
A CVTE COMPANY



Integrated Design, Stable & Reliable Product Quality

Power supply, receiving card and hub board are integrated on one board without wiring, ensuring stable performance. The series meets the RoHS environmental protection requirements of both China and EU, and also has passed EMC test. 5-in-1 board with power and data redundancy is optional.

3-in-1 & 5-in-1 Design | RoHS | EMC



HD Display Effect, Perfect Watching Experience

Cabinet applies 16:9 standard ratio design, and can provide HD and uniform display effect both under static image mode and high-speed dynamic image mode.

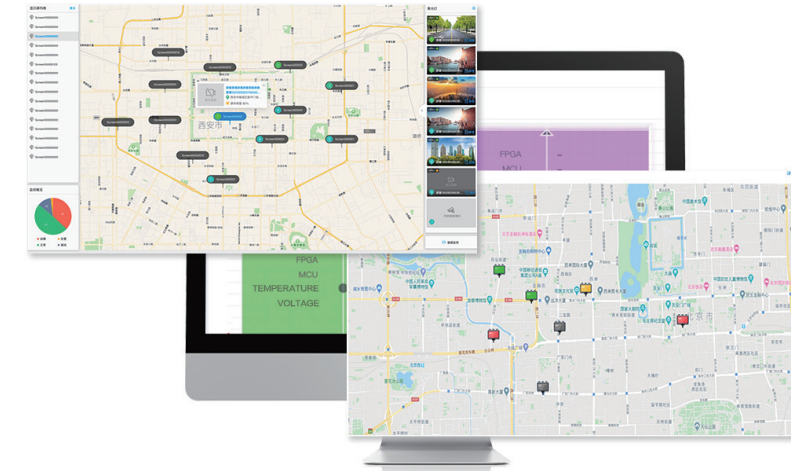
16:9 Standard Ratio | High Gray Scale Level under Low Brightness



High Efficiency Energy Saving & Real Time Monitoring

Branch-circuit design and dynamic energy-saving tech enables eco-friendly and power-saving operation. Open circuit detection and protection function can conduct real-time monitoring and eliminate the "Cross line" phenomenon caused by open circuit point, ensuring dual-protection for screen operation.

Lower Power Consumption | Lower Screen temperature | Real-time Monitoring



Real Time Monitoring

Slim & Light-weight Structure, Space-saving Installation

Cabinet adopts noiseless design without fan built inside, and features high-precision processing and good heat dissipation; fully front-access installation and maintenance can save space for onsite application.

Slim Screen | Noiseless Design | Fully Front Access

