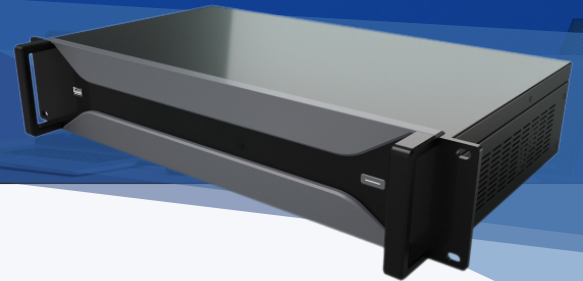




# CRN PCON 600

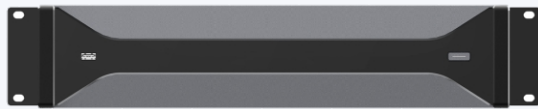
## LED Display Control System



CRN PCON 600 is an LED display controller that supports large loading. It integrates various functions such as LED display control, Android system and video processing, and can be widely used in applications including broadcasting, security monitoring, corporate service, exhibition, Smart City, command and dispatch and etc.

### Product Features

- ✓ Support maximum input resolution 3840\*2160 @60Hz, multi-channel loop out support 4K@60Hz;
- ✓ 18-way Gigabit Ethernet port design to meet ultra-high resolution needs;
- ✓ Full-channel 4K signal input and output;
- ✓ The maximum loading area of a single device is 8.3 million pixels;
- ✓ Support various signal input sources, compatible with different devices;
- ✓ Support video processing function, and full screen and multi-windows display modes ( 2 windows, 3 windows, 4 windows display) with adjustable image size;
- ✓ Support Wireless Screen Sharing function ( mobile phone, MAC system or Windows system);
- ✓ Android 9.0 system, built-in Android applications;
- ✓ Support mobile terminal control function, enabling simple operation on mobile phone;
- ✓ Support one-button standby, input source switching by remote control;
- ✓ Support LED display OSD.



Front Panel



Rear Panel

## Product Specification

Electrical Parameter	
Input Power	AC100-240V~50/60Hz
Rated Power	40W
Environmental Parameter	
Operating Temperature	-10°C~60°C
Operating Humidity	10%~90% no condensation
Storage Temperature	-20°C~70°C
Storage Humidity	10%~90% no condensation
Product Parameter	
Dimensions	482.6 × 281.4 × 97.0mm
Net Weight	4.3kg
Gross Weight	5.5kg



QSTECH Co., Ltd.

Tel: +86 29 8177 9031 E-mail: [marketing@qs-tech.com](mailto:marketing@qs-tech.com) Web: [www.qs-tech.com](http://www.qs-tech.com)